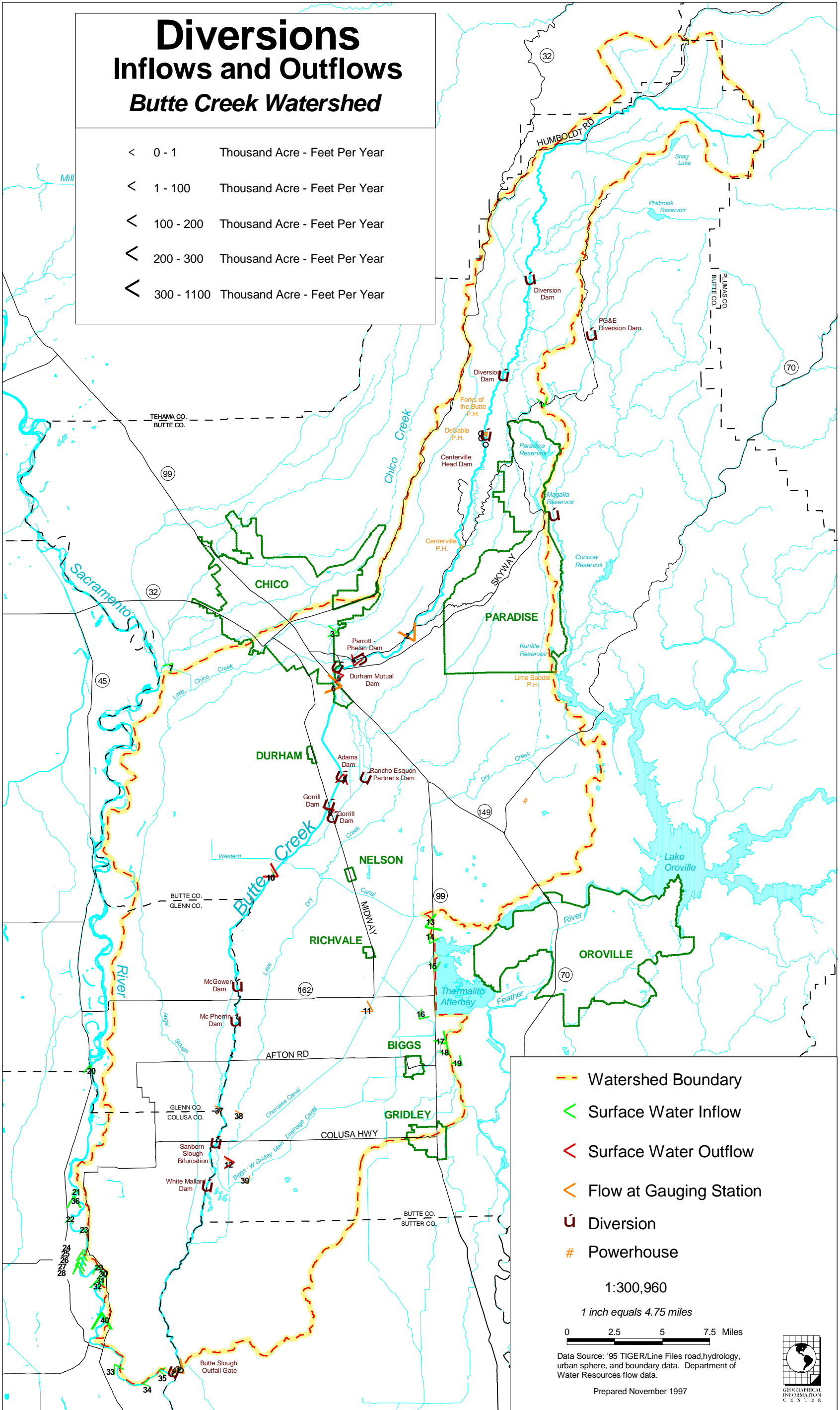


Diversions Inflows and Outflows Butte Creek Watershed

- < 0 - 1 Thousand Acre - Feet Per Year
- < 1 - 100 Thousand Acre - Feet Per Year
- < 100 - 200 Thousand Acre - Feet Per Year
- < 200 - 300 Thousand Acre - Feet Per Year
- < 300 - 1100 Thousand Acre - Feet Per Year



- Watershed Boundary
- Surface Water Inflow
- Surface Water Outflow
- Flow at Gauging Station
- Diversion
- Powerhouse

1:300,960
1 inch equals 4.75 miles



Data Source: '95 TIGER/Line Files road, hydrology, urban sphere, and boundary data. Department of Water Resources flow data.

Prepared November 1997



Surface Water Quantity Gauging Stations

THESE STATIONS WERE TAKEN FROM THE "EARTHINFO" DAILY VALUES CD-ROMS, DWR COMPUTER RECORDS, DWR BULLETIN 230-81 "INDEX TO SOURCES OF HYDROLOGIC DATA", AND THE USGS INTERNET SITE.

H.U.C. STANDS FOR HYDROLOGIC UNIT CODE

COVERAGE INDICATES THE PERCENT OF DAYS WITH DATA BETWEEN THE BEGINNING AND ENDING DATES.

NAME	Map #	USGS ID #	DWR ID #	H.U.C.or BASIN	LATITUDE	LONGITUDE	TOWNSHIP	COVERAGE	BEGIN.	END	YEARS	PARAMETER	STATISTIC	CDEC
							RANGE		YEAR	YEAR	OF RECORD			Access Codes
BUTTE CREEK at Butte Meadows	1	11389700	A4-1500.00	18020120	N40:04:06	W121:34:25		89%	1960	1975	15	FLOW	MEAN	
BUTTE CREEK at Butte Meadows	2	11389700		18020120	N40:04:06	W121:34:25		36%	1974	1975	1	STAGE	MEAN	
BUTTE CREEK below div. dam near Stirling City	3	11389720	A4-1375.00	18020120	N39:58:53	W121:35:15	25N/03E-36F	64%	1986	PRESENT	11	FLOW	MEAN	
FORKS OF BUTTE P.P. near Stirling City	4	11389747		18020120	N39:52:17	W121:37:57		50%	1992	PRESENT	5	FLOW	MEAN	
*TOADTOWN CANAL abv. Butte Can. near Stir. City	5	11389800	A5-2945.00	18020120	N39:53:09	W121:36:35		100%	1986	PRESENT	11	FLOW	MEAN	BBW
BUTTE CREEK blw. Fks. of Butte div. dam, nr. DeSabl	6	11389740		18020120	N39:54:05	W121:37:24			1992	PRESENT	5	FLOW	MEAN	
DE SABLE P.H. near Paradise	7	11389750		18020120	N39:52:10	W121:37:51		100%	1980	PRESENT	17	FLOW	MEAN	
BUTTE CREEK below Cntrl. div. dam nr Paradise	8	11389780	A4-1300.00	18020120	N39:52:01	W121:36:35	23N/03E-10E	100%	1986	PRESENT	11	FLOW	MEAN	
LITTLE BUTTE CREEK near Magalia	9	11389950		18020120	N39:48:38	W121:35:00		100%	1968	1985	17	FLOW	MEAN	
LITTLE BUTTE CREEK near Magalia	10	11389950		18020120	N39:48:38	W121:35:00		46%	1974	1975	1	STAGE	MEAN	
LITTLE BUTTE CREEK near Magalia	11	11389950		18020120	N39:48:38	W121:35:00		99%	1977	1977	1	STAGE	EQUIMEAN	
CENTERVILLE P.H. near Paradise	12	11389775	A4-0190.00	18020120	N39:47:20	W121:39:23		100%	1980	PRESENT	17	FLOW	MEAN	
*BUTTE CREEK near Chico	13	11390000	A4-1110.00	18020120	N39:43:34	W121:42:28		59%	1974	1975	1	STAGE	MEAN	BCK
*BUTTE CREEK near Chico	14	11390000	A4-1110.00	18020120	N39:43:34	W121:42:28		100%	1930	1993	63	FLOW	MEAN	BCK
*BUTTE CREEK at Parrott Diversion	15		ADMTDIV									FLOW	MEAN	BPD
*BUTTE CREEK near Durham	16	11390010	A0-4265.00	18020103	N39:40:36	W121:46:42		93%	1959	PRESENT	38	FLOW	MEAN	BCD
CHEROKEE CANAL near Nelson	17	11390210	A0-0460.00	18020105	N39:34:54	W121:41:54		83%	1970	1974	4	FLOW	MEAN	
*BUTTE CREEK below Western Canal	18		A0-4158.00	<1 MILE BELOW DAM					1992	PRESENT	5	FLOW	MEAN	BWC
CHEROKEE CANAL near Richvale	19	11390225	A0-2984.00		N39-27-54	W12144-30	19N/02E-23M		1960	PRESENT	37	FLOW	MEAN	
BUTTE CREEK nr Gridley	20		A0-4150.00	Colusa Bas	N39-23-03	W121-53-20	18N/01E-29EM		1991	PRESENT	6	FLOW	MEAN	
CHEROKEE CANAL near Gridley	21		A0-0910.00						1991	PRESENT	6	FLOW	MEAN	
BIGGS-WT GRIDLEY MAIN DRAIN abv. Cherokee Cr	22		A0-2980.00	Colusa Bas	N39-19-22	W121-52-51	17N/01E-17BM					FLOW	MEAN	
BUTTE CREEK opp.Colusa BP nr Colusa	23	11390360	A0-4107.00	Sac. Vly Floor	N30-13-33	W121-56-20	16N/01W-23FM					FLOW	MEAN	
BUTTE SLOUGH at Outfall gates near Meridian	24	11390385		18020105	N39:11:43	W121:56:05		21%	1981	1984	3	FLOW	MEAN	
# BUTTE SLOUGH nr Meridian	25	11390395		18020106	N39:08:57	W121:52:41		99%	1952	1979	27	FLOW	MEAN	

1931-1986 RECORDS PUBLISHED BY USGS / UNDER ST. # 11390000.

USGS WEBSITE INDICATES THIS STATION EARTHINFO CDROM ONLY HAS RECORDS

NOTES:

* INDICATES THAT STATION IS RIGGED WITH REALTIME TELEMETRY THROUGH CDEC; SEE ADDRESS BELOW

FLOW ARE IN CUBIC FEET /SECOND

STAGE IS RECORDED IN FEET

"EQUIMEAN" REFERS TO GAUGE HEIGHT VALUES BEING USED

MEAN REFERS TO MEAN DAILY VALUES

REPLACED "BUTTE SLOUGH AT MAWSON BRIDGE"

H.U.C.	BASIN:
18020120	UPPER BUTTE
18020103	SACRAMENTO-LOWER THOMES
18020105	LOWER BUTTE
18020106	LOWER FEATHER
18020104	SACRAMENTO-STONE CORRAL

CDEC INTERNET ADDRESS: <http://cdec.water.ca.gov/>

1. Click on station

2. Enter mnemonic of desired station (See CDEC access codes)

3. Press return

Butte Creek Peak Annual Flows

USGS Gauge # 11390000
1931-1998

